



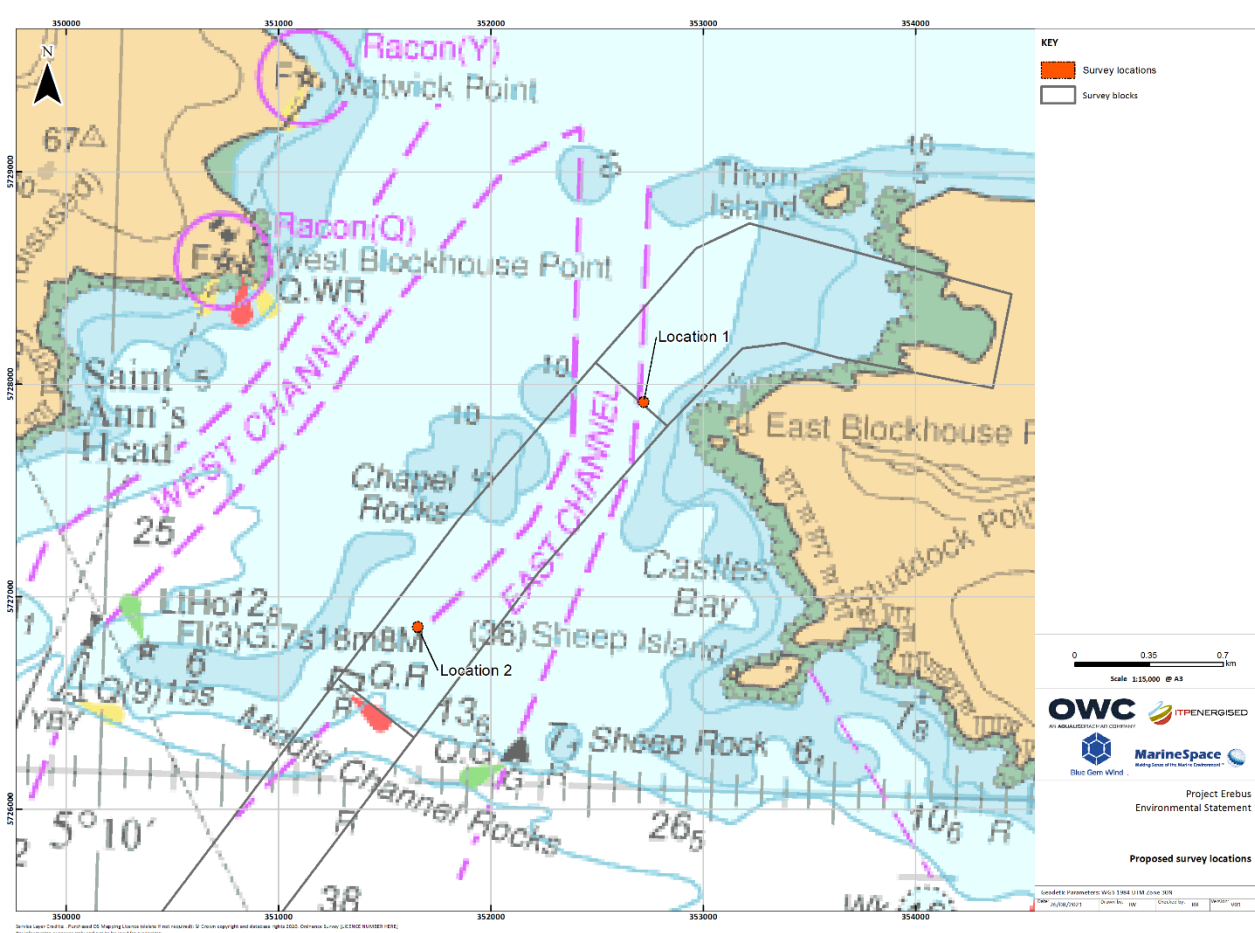
# Project Erebus Floating Offshore Wind Farm

## Notice to Mariners

<b>NtM Number</b>	Erebus/009 v1.0	
<b>Date of Issue</b>	26/08/2021	
<b>1 Planned Activity</b>		
<b>Rows Rock ROV Survey</b>		
<b>Remotely Operated Vehicle Survey of Rows Rock</b>		
<p>A Remotely Operated Vehicle (ROV) survey of two potential wreck/debris sites within the Row Rocks Channel is due to be undertaken to inform the engineering designs and Environmental Impact Assessments (EIA) for the proposed Erebus Floating Offshore Wind Farm (FLOW) offshore export cable.</p> <p>The survey will be completed using a ROV, which involves the use of locally deployed equipment rather than any towed systems. The vessel (<i>Coastal Observer</i>) will be at anchor over the survey area.</p> <p>The survey operations are expected to be completed in 1 day, works are expected to be undertaken on the 9 September. An operation window from the 8-10 September has been provided to allow flexibility.</p> <p>Locations of the two survey locations are provided below (Section 2), the surveys will be completed within a 25 m radius of the single point locations. A chart of the ROV survey area has been provided in Section 5.</p> <p>All vessels are requested to always maintain a safe distance (100m) from the survey vessel (<i>Coastal Observer</i>).</p>		
<b>2 Geographic Co-ordinates (UTM 30 / WGS 84)</b>		
<b>Location 1 (near shore)</b>		
<b>Degrees Minutes Seconds</b>	51° 40'58.380" N	005° 07'49.620" W
<b>Degrees Decimal Minutes</b>	51° 40.973' N	005° 07.827' W
<b>Location 2 (mid channel)</b>		
<b>Degrees Minutes Seconds</b>	51° 40'23.100" N	005° 08'43.380" W
<b>Degrees Decimal Minutes</b>	51° 40.385' N	005° 08.723' W
<b>3 Outline programme of work</b>		
Estimated Start Date:	8 September 2021	Estimated Completion Date: 10 September 2021
<b>These dates are subject to weather permitting, and therefore there may be the potential for an extension to the work duration.</b>		
<b>4 Safe Clearances, Navigation Safety Features and Safety Notes for Mariners</b>		
All vessels are requested to always maintain a safe distance (100m) from the survey vessel.		



## 5 Chart of ROV Survey Area



## 6 Details of the vessel to be used for ROV Survey:

Vessel Name:	Coastal Observer
Vessel Type:	Workboat Catamaran
LOA (m):	10 m
VHF Call Sign:	MGIQ9
MMSI:	232025120
Vessel Bridge Mobile:	07917 703 176
Vessel Sat Phone:	N/A
Onshore Contact:	02039 761 109



## 7 Project Contact Details

<b>Fisheries Liaison Officer: Jonny Lewis</b> Email: <a href="mailto:jonny.lewis@marinespace.co.uk">jonny.lewis@marinespace.co.uk</a> Telephone: 07817 644284	<b>Fisheries Liaison Officer: Rhianna Roberts</b> Email: <a href="mailto:rhianna.roberts@marinespace.co.uk">rhianna.roberts@marinespace.co.uk</a> Telephone: 07375 243358
---	---